

## iRise: Pre-Training Exercise

ITEC 455 Spring 2011 – Prof. Espinosa

Prepared by Kannan Jayaprakash

---

Over the recent past, requirements gathering have become more dynamic and challenging leaving business analysts use agile methodologies and prototyping to achieve maximum precision while gathering requirements. iRise® is one such visualization software popularly used by Business Analysts.

### ***e-Learning***

This exercise intended to provide you with some self-tutorial practice to leverage iRise's eLearning material. iRise® provides users will a lot of material on its website ([www.iRise.com](http://www.iRise.com)). The eLearning courses offered are useful to help you gain knowledge and expertise about the tool. To explore the different eLearning courses, please visit the following Link:

[http://www.iRise.com/services/training\\_elearning](http://www.iRise.com/services/training_elearning)

There are several courses that provide a complete expertise about iRise. However, the following are the most important courses for you, while the remaining provides more advanced skills relating iRise®

**You MUST complete this portion of the eLearning tutorial before the iRise training:**



iRise Overview
<b>Prerequisites:</b> None
<b>Duration:</b> Approximately 30 Minutes
<b>Availability:</b> Online
<b>Version:</b> iRise 8 (All Kogod Lab PCs have iRise 8.6 installed)
<b>Completion Mandatory.</b>

It is **strongly recommended** that you complete this entire portion of the eLearning tutorial before the iRise training, particularly the contents **bold faced** below.

iRise Explained
<b>Prerequisites:</b> iRise Overview (recommended)
<b>Duration:</b> Approximately 4 Hours
<b>Availability:</b> Online

**Version:** iRise 8 (All Kogod Lab PCs have iRise 8.6 installed)

**Complete as much as you can.**

Please click on the  button to begin the eLearning. As a first step, iRise® will require you to register for the course. Please provide relevant information and hit the submit button to proceed. The following page will provide you a brief description about the course. Please click on the  button to begin the course.

iRise® will send an email with a link to the id you specified while registration. You can use this link to resume your eLearning when desired. On completion of the course, iRise® will provide you a course completion certificate. Please ensure to print and submit this to your professor.

**Note:**

- *Though the courses have an estimated time, they are self-paced.*
- *During the e-Learning, when prompted for the iRise version. Please choose iRise 8*
- *The "iRise Explained" This course has several modules. They are listed below. Amongst them, the ones highlighted are very important and provide useful hands-on expertise. In the interest of time, you may choose to go through at least these modules. However it is best to go through each of them sequentially.*

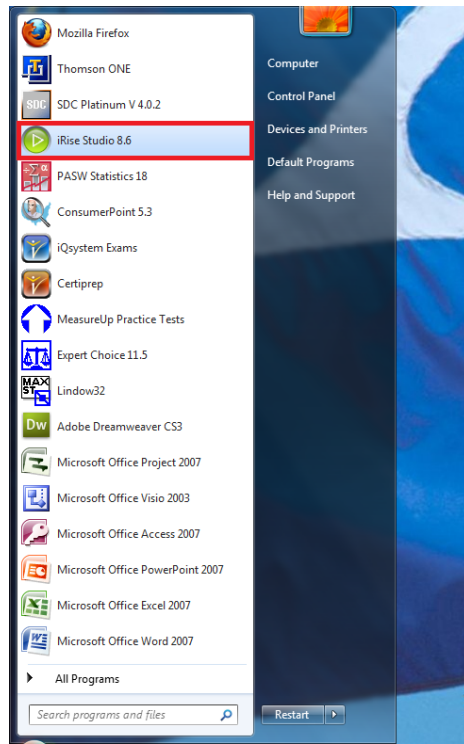
- ✓ Course Introduction (10 min)
- ✓ iRise Methodology (10 min)
- ✓ Introduction to iRise studio (20 min)
- ✓ **Building Scenarios** (25 min)
- ✓ **Analysis Level Simulation** (40 min)
- ✓ **Building Dynamic Simulations** (50 min)
- ✓ Building Reusable Components (40 min)
- ✓ Capturing Reviewer Feedback (30 min)

- *The eLearning is more effective when you try what you learn. Hence please pause the eLearning where necessary and try to execute the instructions on the actual software. Please refer to **Appendix A** for some quick instructions to work on iRise®.*

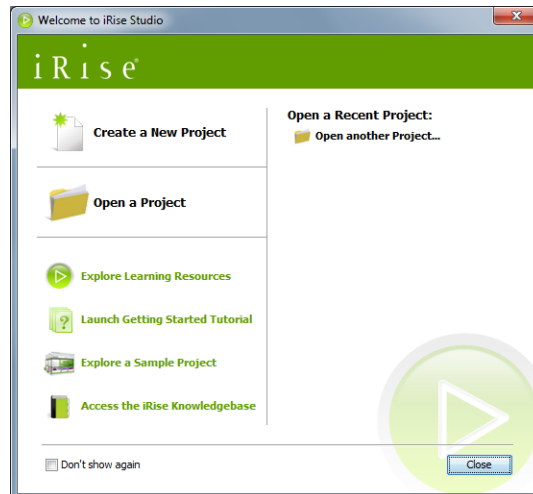
The “iRise Explained” course, allows you to test yourself with the “Knowledge Assessment” section. Please plan to test yourself once you have completed the course. iRise provides a certificate with your score.

## Appendix A: Hands on

iRise is installed in all the computers in both FSIT and Mini Lab at Kogod. Log on to your machine and hit the Windows button and look for the iRise Studio 8.6 application. Click to launch the application

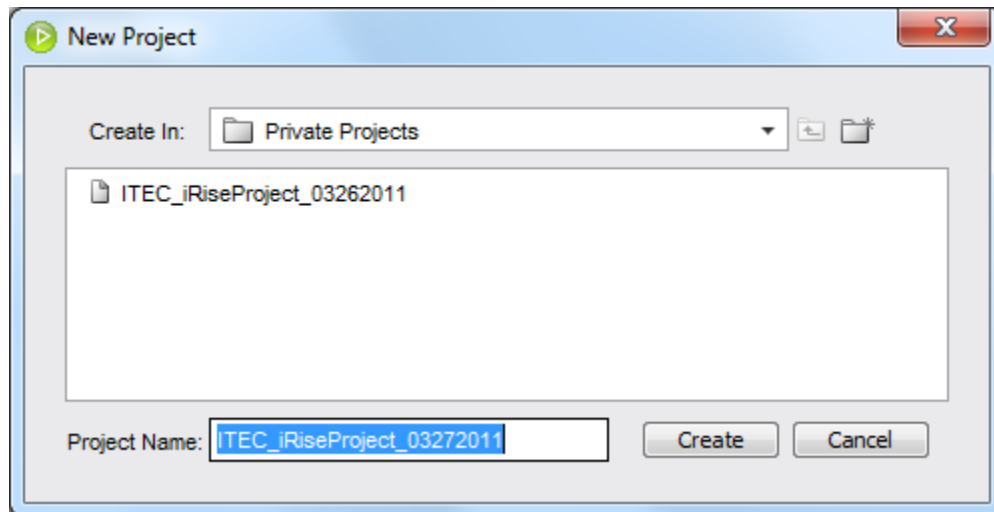


The iRise® Application launches with the following welcome window:



*Note: The Home screen provides pointers to several knowledge sources. Please plan to explore them to gain more knowledge about the tool.*

Click on the **“Create a New Project”** option to create your project. Name your project and click the create button.



**Note:** *It is important to follow a naming convention while creating a project. You may be maintaining different version of your project and hence it is important to maintain a naming convention. The recommended name is AnyName\_MMDDYYYY.*

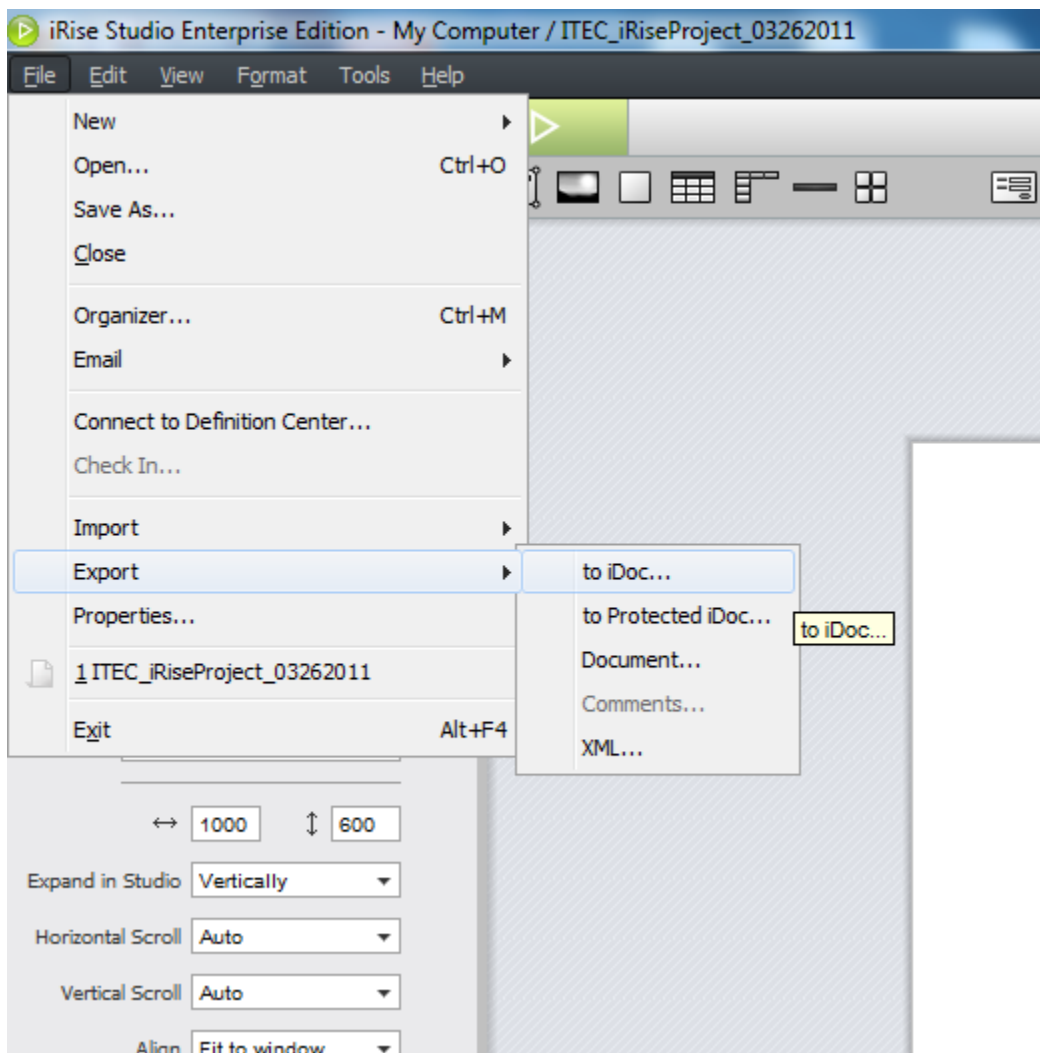
Once the project is created, explore iRise® with all that you learnt from the eLearning course. As always, remember to save all your work. Besides saving your project, please follow **Appendix B** for guidance on how to manage your project files.

## Appendix B: Managing your project files

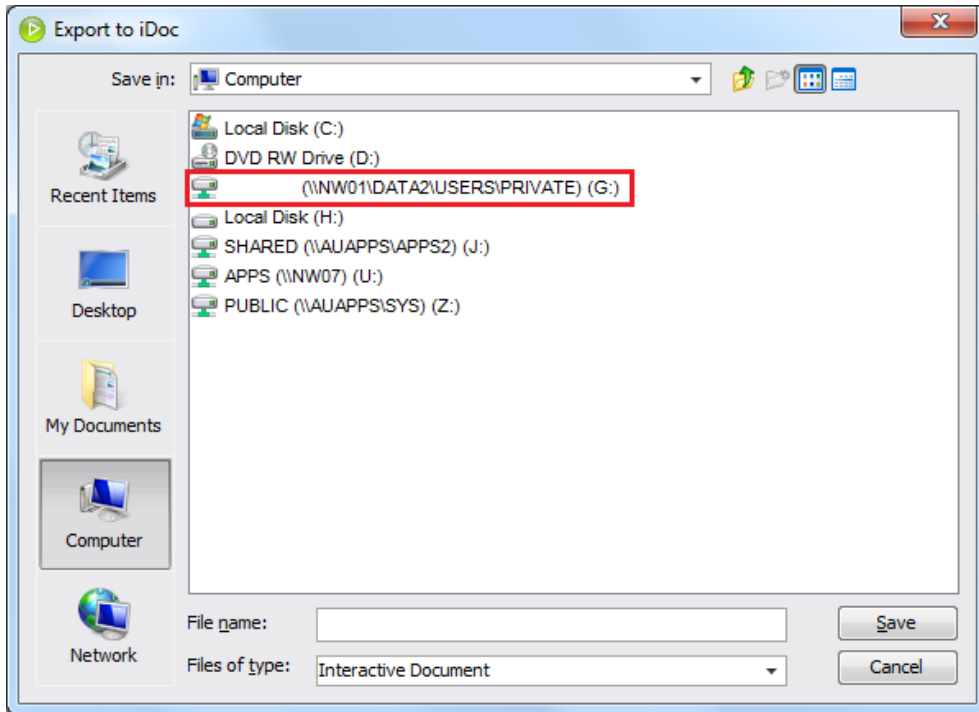
Please note the projects created in your lab machine will not be available when you get back later. Hence it is important to wisely use “**G Drive**” to back up your work. If your “**G Drive**” is not accessible, please contact AU Office of Information Technology (OIT) for assistance.

- Exporting your project

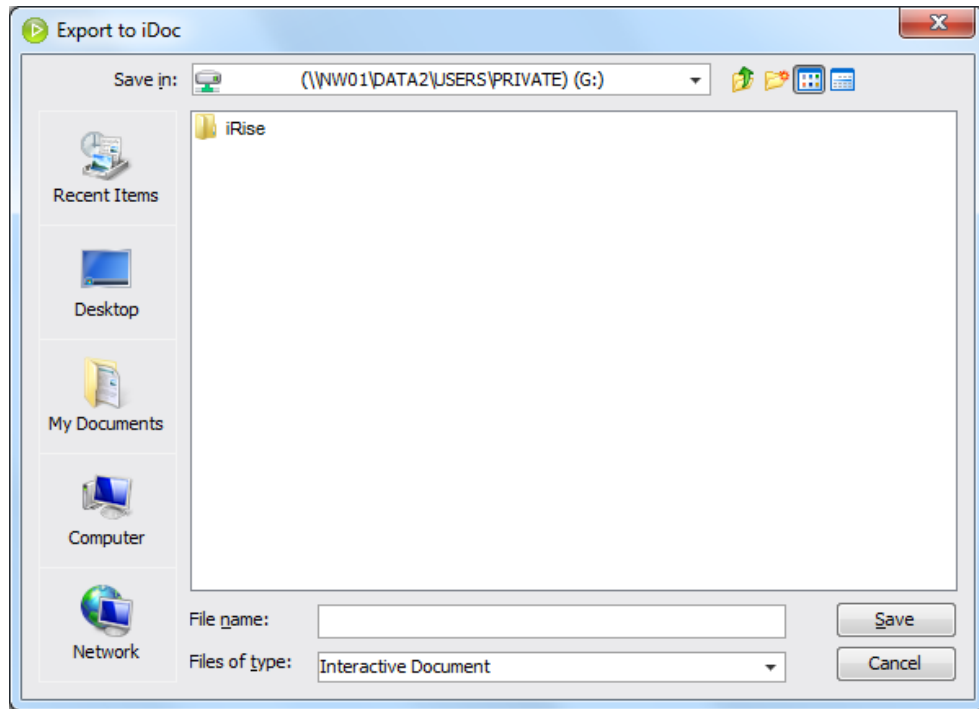
Once you are finished for the day, please plan to export them as an iDoc. To export them perform the following: Go to the **File** menu, locate the **Export** option and choose **to iDoc**



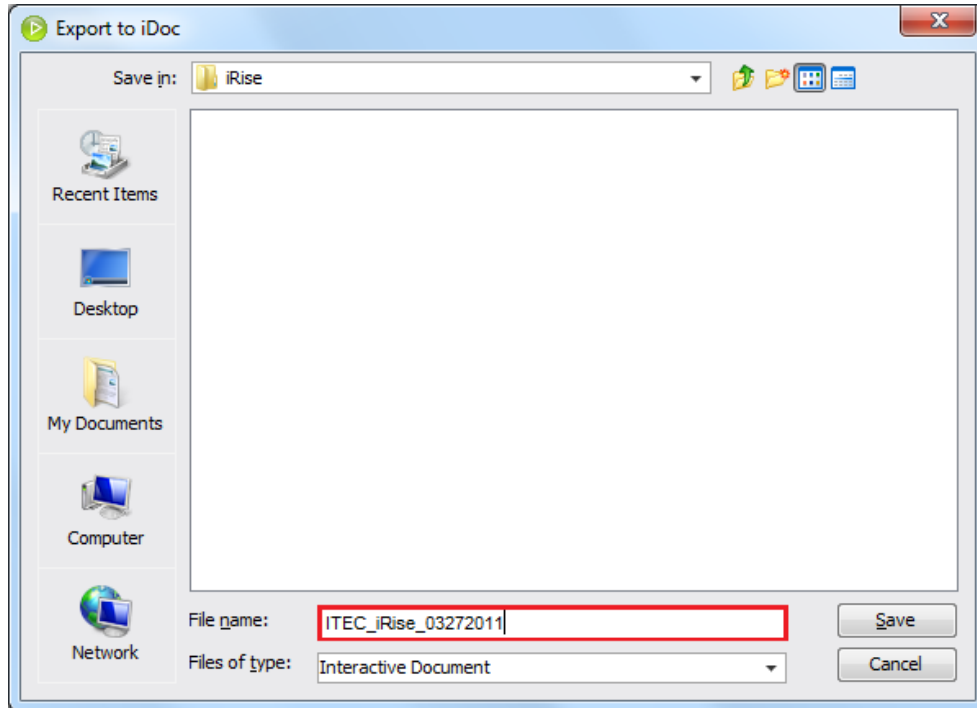
Browse through the file system to locate your “**G Drive**”.



Create a new folder and name it “**iRise**”. This is just to make it easier for you to locate your files

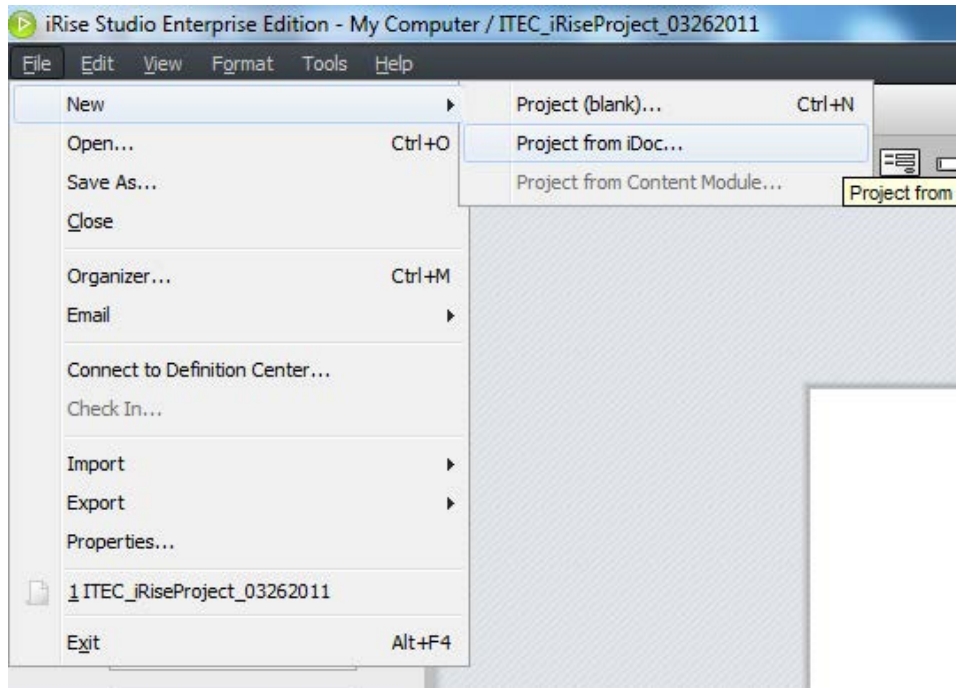


Name your project and click the **Save** button. When you save your work, your project is saved as an **iDoc** file. As illustrated earlier, please export your project with a suitable name. Remember the importance of a naming convention while naming your project.

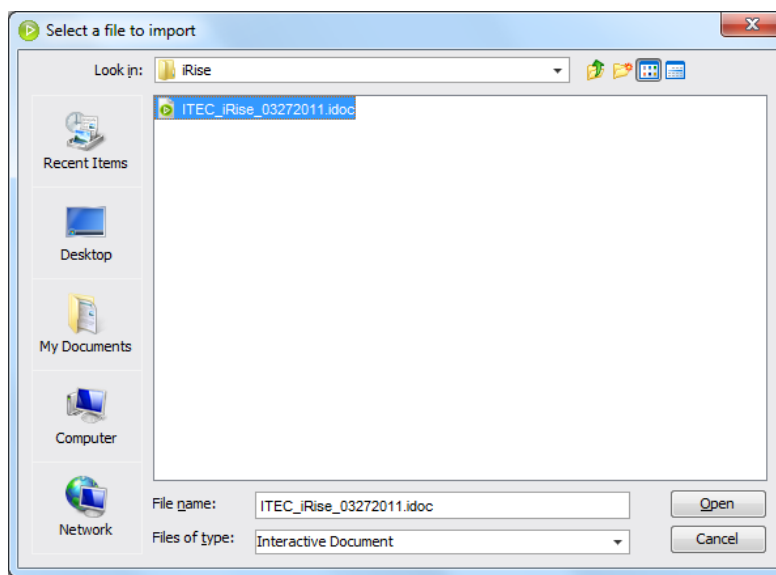


- Importing a saved iDoc

While resuming your previous day's work, it is useful to import your saved iDoc. This will save a lot of time. To import the saved iDoc, perform the following steps: Go to the **File** menu, locate the **New** option and choose **Project from iDoc**



Following those steps will lead you to window where you can Locate the saved iDoc file. Browse through the file system to locate your project from the G Drive





Please note, as you are creating a new version of your old work, hence please specify a different name. If you were following the recommended naming convention, please use a new date.

